

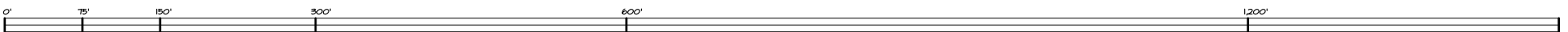


LEGEND

- A. EXISTING CHAPEL
- B. EXISTING WORSHIP BUILDING
- C. EXISTING FELLOWSHIP HALL
- D. NEW TERRACE
- E. RE-LOCATE EXISTING TRAILERS
- F. RE-LOCATED PLAYGROUND
- G. NEW PARKING
- H. EXISTING PARKING TO REMAIN
- I. EXISTING CEMETERY
- J. EXISTING CHAPEL
- K. EXISTING SHELTER
- L. EXISTING PICNIC AREA
- M. FUTURE PARKING
- N. EXISTING RECTORY
- O. EXISTING WELL HOUSE
- P. RELOCATED SHED

PARKING TABULATION

Existing to Remain:	49
Existing to be Demolished:	51
New:	78
PROPOSED TOTAL:	127
CURRENT TOTAL:	100



**PHASE 1A
SITE PLAN**

MAY 4, 2007

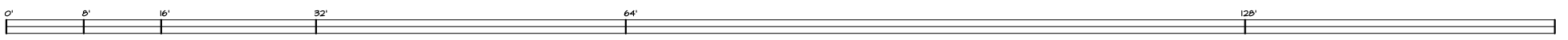
Pohick Episcopal Church
PLANNING STUDY
Lorton, Virginia

Kerns Group Architects, P.C.
Arlington, Virginia



LEGEND

- CORRIDOR / NURSERY RENOVATION
Install new flooring, painting, light fixtures
- RESTROOM RENOVATIONS
- FELLOWSHIP HALL RENOVATION
Install new flooring, new acoustical ceiling, painting

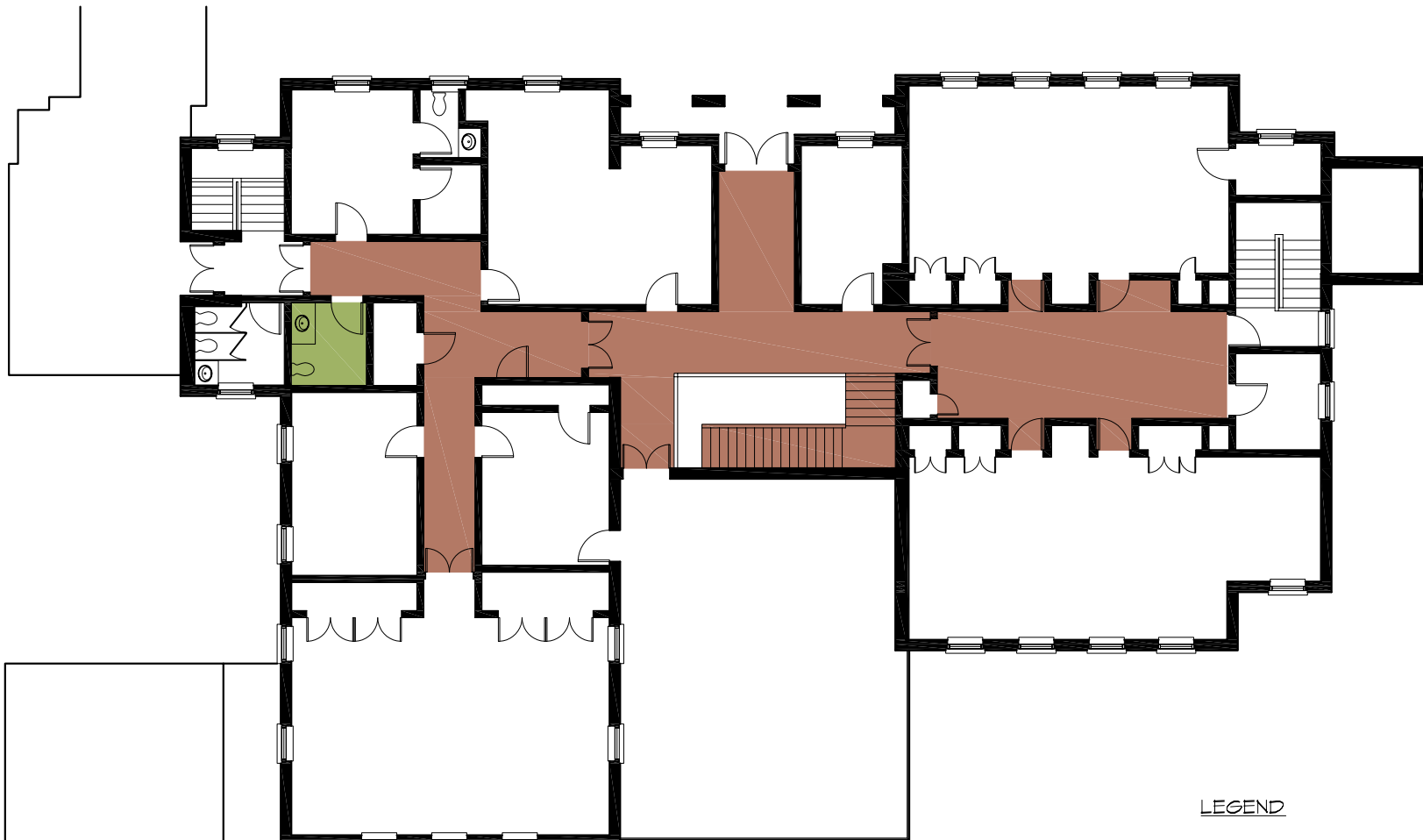


Pohick Episcopal Church
 PLANNING STUDY
 Lorton, Virginia

PHASE 1-B
 LOWER LEVEL
 MAY 4, 2007

Kerns Group Architects, P.C.
 Arlington, Virginia

Copyright ©2007 Kerns Group Architects, P.C. All Rights Reserved



LEGEND

- CORRIDOR RENOVATION
Install new flooring, painting
- RESTROOM RENOVATIONS



Pohick Episcopal Church
 PLANNING STUDY
 Lorton, Virginia

PHASE 1-B
 UPPER LEVEL
 MAY 4, 2007

Kerns Group Architects, P.C.
 Arlington, Virginia

Copyright ©2007 Kerns Group Architects, P.C. All Rights Reserved



LEGEND

- A. EXISTING CHAPEL
- B. EXISTING WORSHIP BUILDING
- C. EXISTING FELLOWSHIP HALL
- D. TERRACE
- E. EDUCATION ADDITION
- F. PLAYGROUND
- G. EXISTING CEMETERY
- H. EXISTING PARKING TO REMAIN
- I. EXISTING PICNIC AREA
- J. EXISTING SHELTER
- K. EXISTING CHAPEL
- L. GARDEN
- M. FUTURE PARKING
- N. EXISTING RECTORY
- O. EXISTING WELL HOUSE
- P. RELOCATED SHED

PARKING TABULATION

Existing to Remain: 127

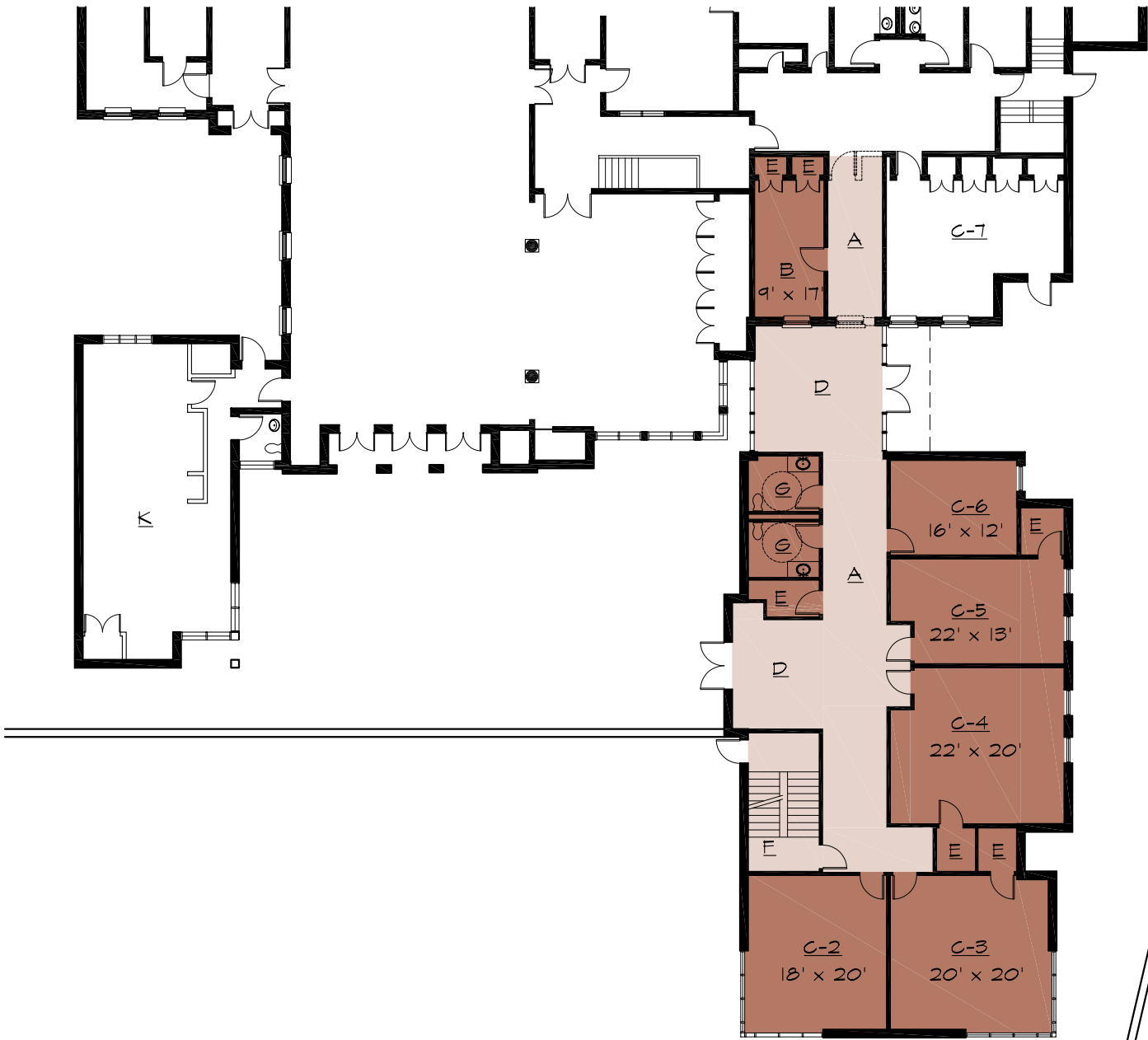


**PHASE 2
SITE PLAN**

MAY 4, 2007

Pohick Episcopal Church
PLANNING STUDY
Lorton, Virginia

Kerns Group Architects, P.C.
Arlington, Virginia



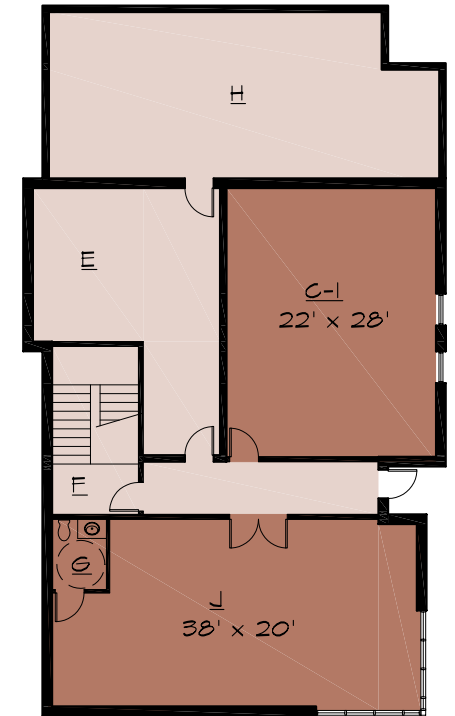
LEGEND

- A. CORRIDOR
- B. OFFICE
- C. CLASSROOM
- D. LOBBY
- E. STORAGE
- F. STAIR
- G. RESTROOM
- H. MECHANICAL
- I. CRAWLSPACE
- J. NURSERY
- K. MEETING ROOM

CLASSROOMS

PHASE 2 LOWER LEVELS: 7
 PHASE 2 TOTAL: 15

PARTIAL BASEMENT PLAN



PHASE 2
 LOWER LEVEL

MAY 4, 2007

Pohick Episcopal Church
 PLANNING STUDY
 Lorton, Virginia

Kerns Group Architects, P.C.
 Arlington, Virginia

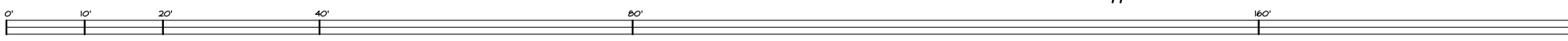


LEGEND

- A. CORRIDOR
- B. OFFICE
- C. CLASSROOM
- D. LOBBY
- E. STORAGE
- F. STAIR
- G. RESTROOM

CLASSROOMS

PHASE 2 UPPER LEVEL:	<u>8</u>
PHASE 2 TOTAL:	<u>15</u>



Pohick Episcopal Church
 PLANNING STUDY
 Lorton, Virginia

PHASE 2
 UPPER LEVEL
 MAY 4, 2007

Kerns Group Architects, P.C.
 Arlington, Virginia

Copyright 2007 Kerns Group Architects, P.C. All Rights Reserved



Pohick Episcopal Church
PLANNING STUDY
Alexandria, VA

VIEW FROM
OLD COLCHESTER RD.

MAY 4, 2007

Kerns Group Architects, P.C.
Arlington, Virginia

Copyright 2007, Kerns Group Architects, P.C., All Rights Reserved



LEGEND

- A. EXISTING CHAPEL
- B. EXISTING WORSHIP BLDG.
- C. EXISTING FELL. HALL
- D. NEW COLONNADE
- E. GARDEN
- F. PLAYGROUND
- G. FUTURE SANCTUARY
- H. EXISTING PARKING TO REMAIN
- I. EXISTING CEMETERY
- J. EXISTING CHAPEL
- K. EXISTING SHELTER
- L. EXISTING PICNIC AREA
- M. FUTURE PARKING
- N. AUTO COURT
- O. EXISTING WELL HOUSE
- P. EXISTING RECTORY
- Q. RELOCATED SHED

PARKING TABULATION

Existing to Remain:	105
Existing to be Demolished:	22
Future:	116
PROPOSED TOTAL:	221

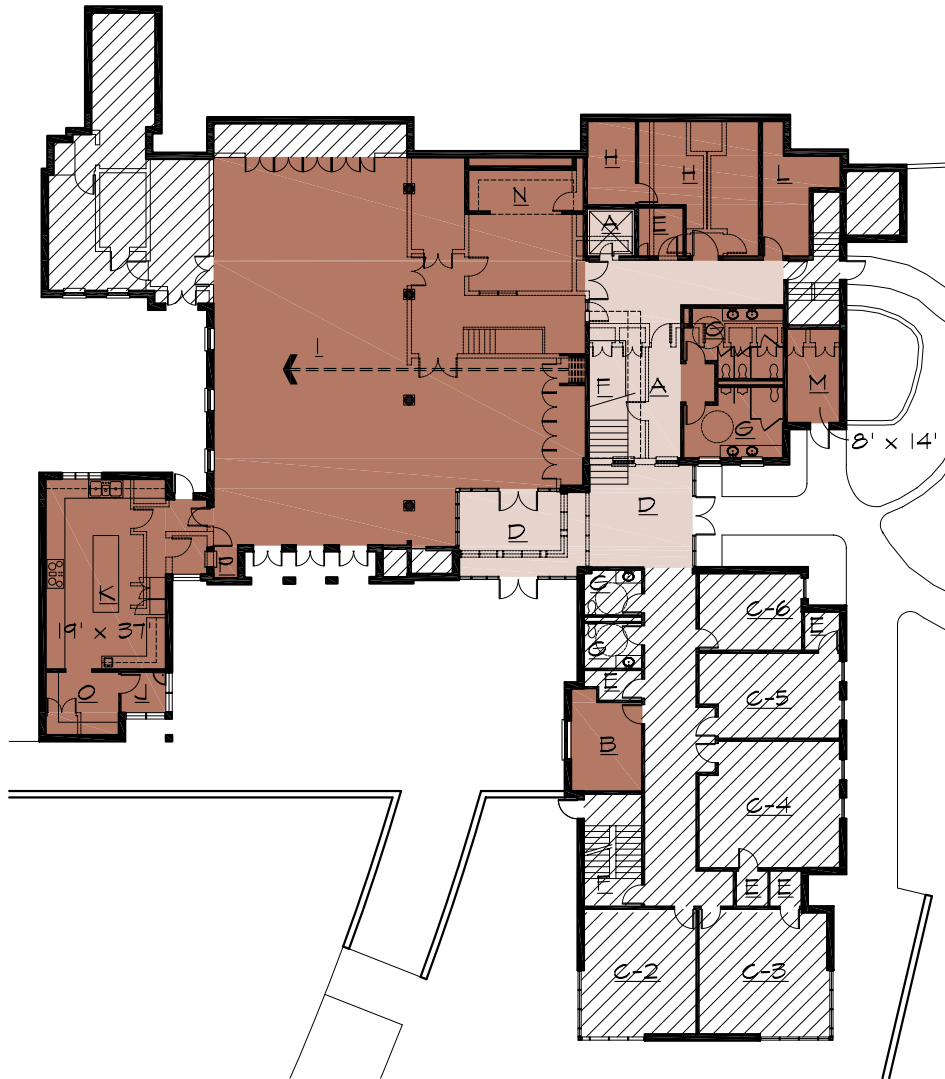


Pohick Episcopal Church
 PLANNING STUDY
 Lorton, Virginia

⊕
 MASTER
 PLAN
 MAY 4, 2007

Kerns Group Architects, P.C.
 Arlington, Virginia

Copyright ©2007 Kerns Group Architects, P.C. All Rights Reserved



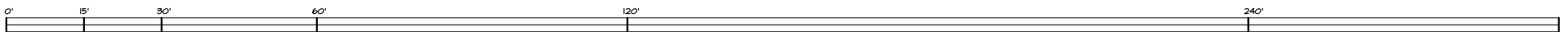
LEGEND

- A. CIRCULATION
- B. OFFICE
- C. CLASSROOM
- D. LOBBY
- E. STORAGE
- F. STAIR
- G. RESTROOM
- H. MECHANICAL
- I. FELLOWSHIP HALL
- J. JANITOR
- K. KITCHEN
- L. ELECTRICAL
- M. EXTERIOR STORAGE
- N. COATS
- O. PANTRY
- P. PASS-THRU WINDOW

CLASSROOMS

PHASE 3 LOWER LEVELS: 6
 PHASE 3 TOTAL: 11

 EXISTING TO REMAIN



PHASE 3
 LOWER LEVEL

MAY 4, 2007

Pohick Episcopal Church
 PLANNING STUDY
 Lorton, Virginia

Kerns Group Architects, P.C.
 Arlington, Virginia



LEGEND

- A. CIRCULATION
- B. OFFICE
- C. CLASSROOM
- D. LOBBY
- E. STORAGE
- F. STAIR
- G. RESTROOM
- H. VESTING
- I. MUSIC
- J. KITCHEN
- K. SACRISTY
- L. DISPLAY
- M. GIFT
- N. COATS
- O. MEETING
- P. ADMINISTRATION
- Q. COPY/WORKROOM

CLASSROOMS

PHASE 3 UPPER LEVEL: 5
 PHASE 3 TOTAL: 11

 EXISTING TO REMAIN



**PHASE 3
UPPER LEVEL**

MAY 4, 2007

Pohick Episcopal Church
 PLANNING STUDY
 Lorton, Virginia

Kerns Group Architects, P.C.
 Arlington, Virginia

Copyright ©2007 Kerns Group Architects, P.C. All Rights Reserved

Conceptual Cost Estimate Summary

Phase 1A – Parking & Site Improvements	\$1,600,000
Phase 1B – Parish Hall “Minor” Renovation	\$400,000
Phase 2 – Education Wing Addition	\$3,400,000
Phase 3 – Parish Hall “Major” Renovation	\$4,400,000